

## Table of Contents

|                 |   |
|-----------------|---|
| Overlay II..... | 2 |
| Overlay .....   | 2 |
| History .....   | 4 |

## Overlay II

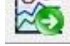
### Time Shifted Data

PatternFinder offers the option of shifting two or more signals to the same starting time. This is especially useful when analyzing data from multiple recorders that have been applied in a similar manner with the same sampling frequency, but have different start times.

## Overlay

Create or open a project

Before overlaying the signals, it is recommended to prepare the data first by extracting the data you want to analyze (see tutorial 2).

Click on the **Create Overlay Chart** button  and the following figure appears:

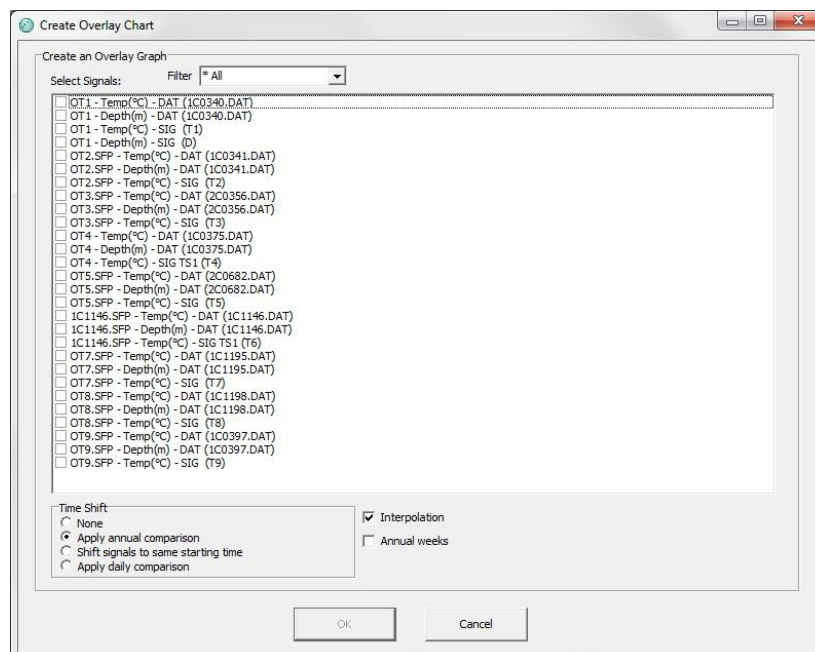


Figure 1 Create Overlay Graph

Select the signals you want to overlay. It is possible to filter the signals by selecting one of the options in the drop-down list. In the figure 2 depth has been selected.

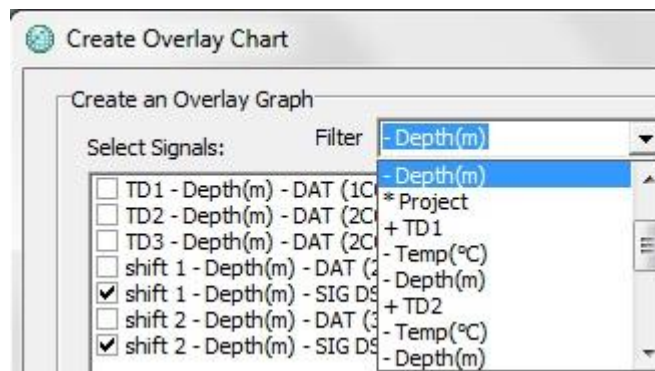


Figure 2 Filter

Under **Time Shift** select **Shift** signals to same starting time and **Interpolation** (see figure 1).

Once the signals have been selected, click **OK**.

The following chart appears:

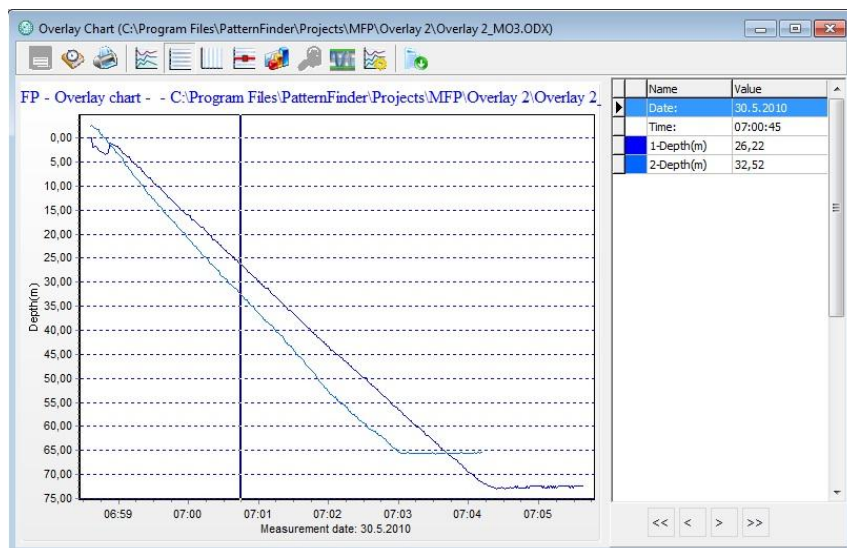



Figure 3 Overlay chart

Click the **Overlay statistics** button  to perform an overlay statistics analysis.

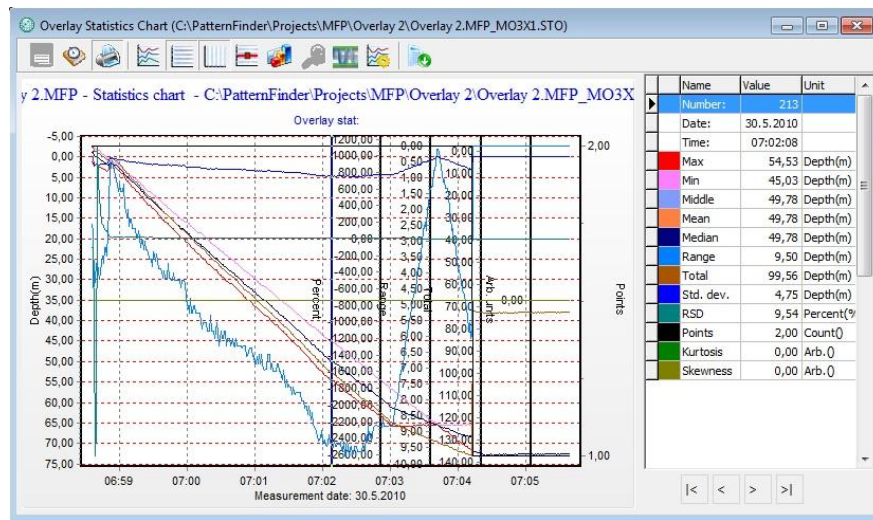



Figure 4 Overlay statistics chart

## History

Click the **History** button  on the chart bar to add comments and view information on the origin of the signal and the progress of the project (see figure 5). Click **Print** to print out the information (see figure 6).

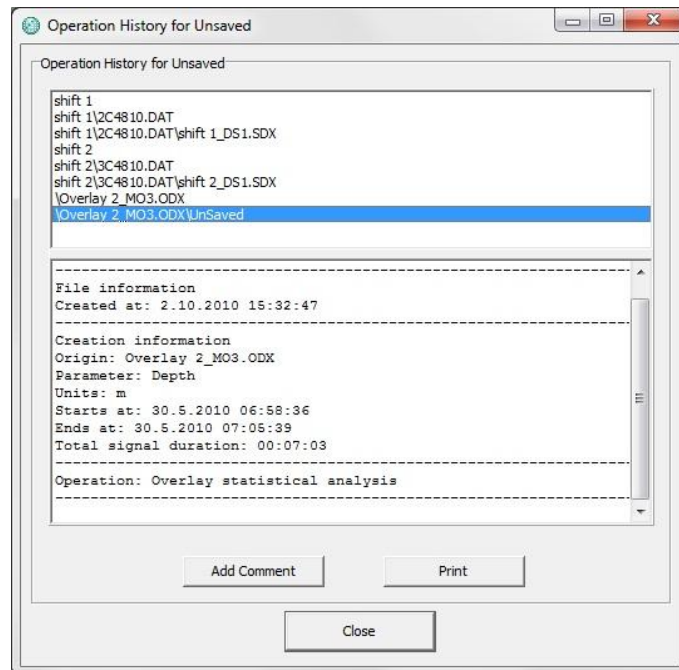


Figure 5 History

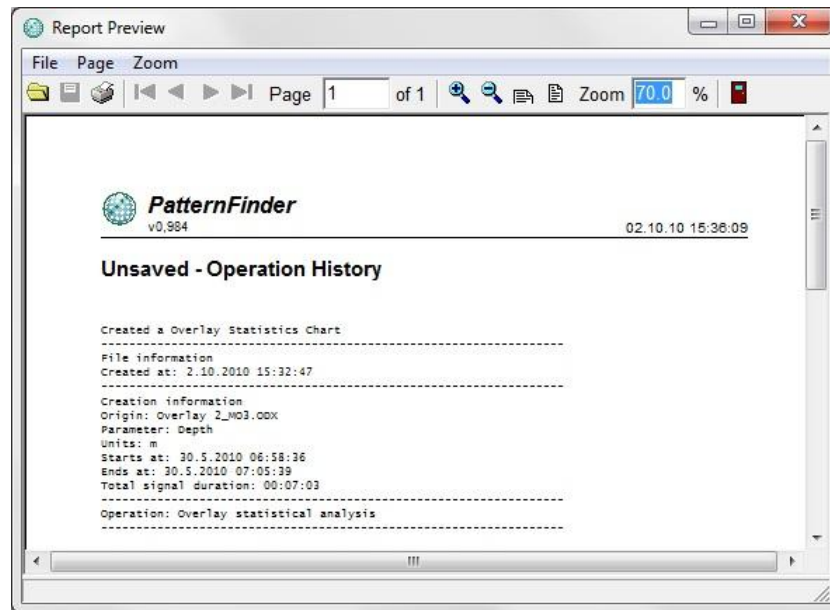


Figure 6 Print preview